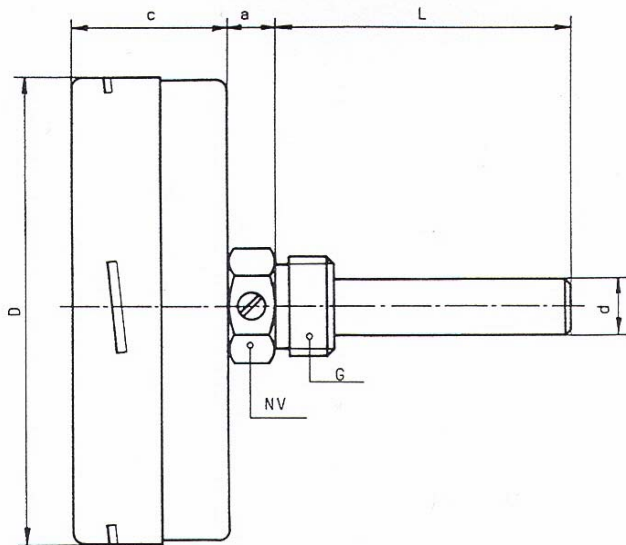


**BIMETAL DIAL THERMOMETERS  
PROCESS INDUSTRY VERSION, STEM HORIZONTAL  
ALL STAINLESS STEEL**



DIMENSIONAL DATA IN MM.							
TYPE NO.	D	c	a	NV	G	d	L=STD.IMMERSION TUBE
019.063	63	31	12	24	¼" BSP	12	45, 50, 60, 80, 100 120, 160, 200, 300
019.080	80	32,5	12	24	½" BSP	12	
019.100	100	33	12	24	½" BSP	12	
019.160	160	34	12	24	½" BSP	12	

**CASE AND BEZEL** : Stainless steel with bayonet lock ring ( 1.4301 )  
**DIAL** : White with black markings. 270 ° defl  
**PROTECTION** : IP 54  
**STEM** : ø 8 mm. Stainless steel with adjusting screw.  
**POCKET** : ½" BSP Stainless steel ø 10 mm.  
**ACCURACY** : 1,0 ( EN 13 190 )

RANGES °C	GRADUATION	RANGES °C	GRADUATION	RANGES °C	GRADUATION
-40 + 40	: 1	0 - 50	: 1	0 - 200	: 2
-30 + 50	: 1	0 - 60	: 1	0 - 250	: 5
-20 + 60	: 1	0 - 80	: 1	0 - 300	: 5
-15 + 45	: 1	0 - 100	: 2	0 - 400	: 5
-10 + 60	: 1	0 - 120	: 2	0 - 500	: 5
0 - 40	: 1	0 - 160	: 2	0 - 600	: 10

**OPTIONS FOR BIMETAL THERMOMETERS :**

- Surface mounting flange
- Panel mounting flange
- Alarm contact
- One-way reset maximum pointer
- Glycerine filling
- Scale range °F or °C+°F
- Other pipe threads
- Red mark on dial