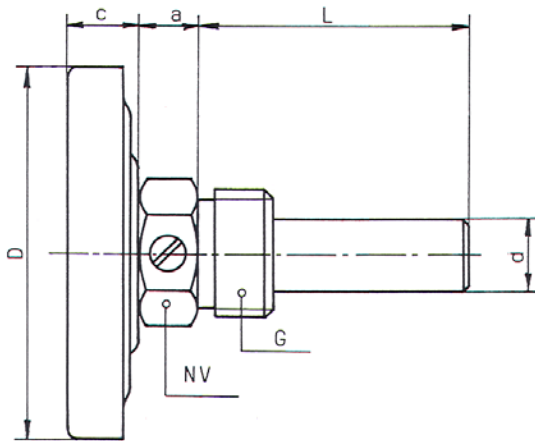


**BIMETAL DIAL THERMOMETERS STEM HORIZONTAL  
FOR HEATING SYSTEMS, ACCURACY: CLASS 2,0**



| DIMENSIONAL DATA IN MM. |     |    |      |    |       |    |                                      |
|-------------------------|-----|----|------|----|-------|----|--------------------------------------|
| TYPE NO.                | D   | c  | a    | NV | G     | d  | L=STD.IMMERSION TUBE                 |
| 332 VVS                 | 63  | 13 | 10,5 | 22 | ½" RG | 12 | 28, 45, 50, 63,<br>80, 120, 160, 200 |
| 333 VVS                 | 80  | 13 | 10,5 | 22 | ½" RG | 12 |                                      |
| 334 VVS                 | 100 | 13 | 10,5 | 22 | ½" RG | 12 |                                      |
| 335 VVS                 | 160 | 17 | 10,5 | 22 | ½" RG | 12 |                                      |

**CASE AND BEZEL** : Galvanized steel  
**WINDOW** : Instrument Glass  
**DIAL** : White with black markings. 270 ° defl  
**STEM** : ø 9 mm. brass with adjusting screw.  
**POCKET** : ½" BSP brass ø 12 mm.

| RANGES °C | GRADUATION | RANGES °C | GRADUATION | RANGES °C | GRADUATION |
|-----------|------------|-----------|------------|-----------|------------|
| -30 + 50  | : 1        | -20 + 60  | : 1        | 0 – 80    | : 1        |
| -20 + 60  | : 1        | -10 + 60  | : 1        | 0 – 120   | : 2        |

**OPTIONS FOR BIMETAL THERMOMETERS:**

- Surface mounting flange
- Panel mounting flange
- Alarm contact
- One-way reset maximum pointer
- Scale range °F or °C+°F
- Other pipe threads
- Red mark on dial

